

## CAT.5E 24AWG U/UTP Cable

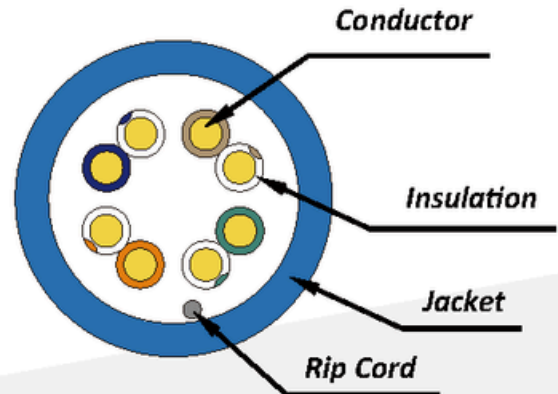
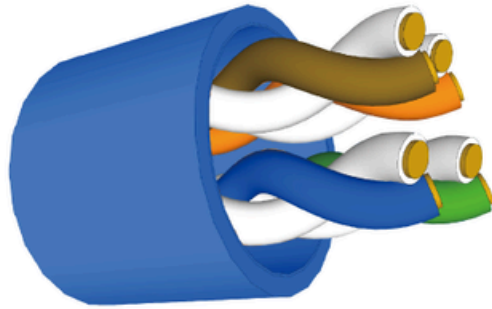
SOLID CM CABLE

FC-01-00001-BL (BLUE)

FC-01-00001-RD (RED)

FC-01-00001-GRY (GRAY)

International : IEC 61156-5 (Edit 2.1)



### Features

- High performance of transmission.
- High quality of safety property.
- Sweep frequency up to 350 MHz.
- Reelex II carton and easy to pull out.
- Carton with one layer corrugated design providing sufficient strength and saving packaging space.

### Description

- 1. CONDUCTOR Size :
  - 1-1. Type : Solid bare copper
- 2. INSULATION :
  - 2-1. Type : Polyolefin (PO)
  - 2-2. Diameter :  $0.87 \pm 0.02 \text{mm}$  ;  
 $0.86 \pm 0.02 \text{mm}$
- 3. JACKET TYPE : Polyvinyl chloride (PVC)
  - 3-1. Overall Diameter :  $4.8 \pm 0.02 \text{mm}$
  - 3-2. Thickness :  $0.45 \pm 0.05 \text{mm}$

### General

- Cold bend test :  $-20^{\circ}\text{C}$  for 4hr
- Dielectric strength : 1.5 KV AC for 2S
- Min bending radius :  $\geq 4$  times of overall diameter
- Max pulling tension :  $\leq 110 \text{N}$
- Installation temperature :  $0^{\circ}\text{C}$  to  $60^{\circ}\text{C}$
- Operating temperature :  $-20^{\circ}\text{C}$  to  $75^{\circ}\text{C}$

Want to know more about FiberCore?

For more information visit [www.fibercore-plus.com](http://www.fibercore-plus.com) or contact [sales@fibercore-plus.com](mailto:sales@fibercore-plus.com)

V5.2 - 01202026

