

FIBER PATCHCORD DUPLEX UPC/ APC

Product Overview

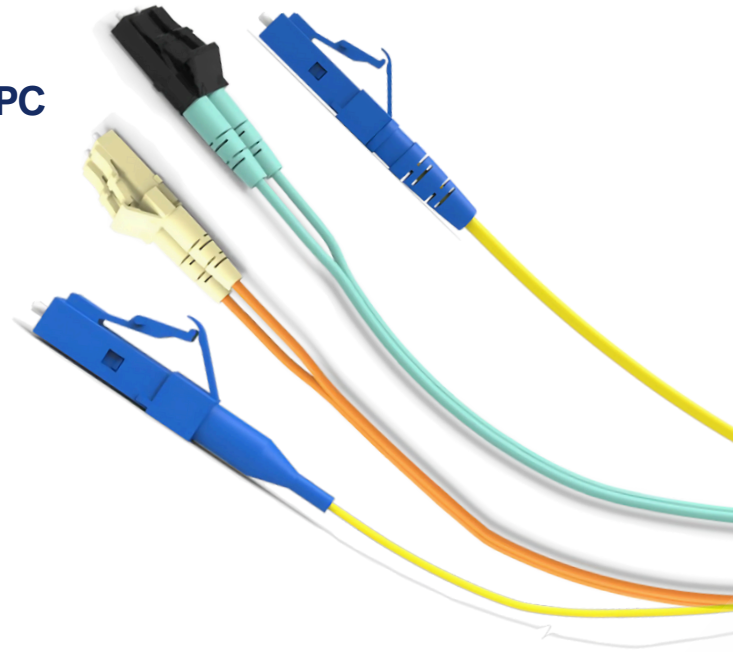
FIBERCORE offers one of the industry's broadest selections of cable assemblies, manufactured in the USA with UL certification, using Corning® optical fiber as raw material.

Features

- Standard patch cords are dual ended with industry standard SC, LC, ST, FC or MTRJ connectors

Technical Specifications

- **Product Type:** Standard Patch Cords
- **Fiber Category:** Single-mode OS2 / 62.5µm Multimode OM1 / 50µm Multimode OM3 / OM4 / OM5
- **Fiber Count:** 2F
- **Connector Type:** LC Duplex, Standard Dust Caps / SC Duplex, Standard Dust Caps
- **Color:** Orange / Aqua / Magenta / Lime Green / Yellow



Connector Performance

CONNECTOR	MAX IL	RL
Single-Mode LC	0.20 db	≥55 dB
Single-mode LC/APC	0.20 dB	≥65 dB
Single-mode SC	0.20 dB	≥55 dB
Single-mode SC/APC	0.20 dB	≥65 dB
Single-mode ST	0.20 dB	≥55 dB
Single-mode FC	0.20 dB	≥55 dB
Single-mode FC/APC	0.20 dB	≥65 dB
Single-mode MTRJ	0.75 dB	≥65 dB
Multimode LC	0.20 dB	≥40 dB
Multimode SC	0.20 dB	≥25 dB
Multimode ST	0.20 dB	≥25 dB
Multimode FC	0.20 dB	≥25 dB



Want to know more about FiberCore?

For more information visit www.fibercore-plus.com or contact sales@fibercore-plus.com

V1.0 - 09012025

Technical Sketch

Available in any combination of connectors upon request

Most common combination of connectors

LC DUPLEX – LC DUPLEX A to B and B to A - STANDARD



SC DUPLEX – SC DUPLEX A to B and B to A - STANDARD



Ordering Information

Connector Type	Fiber Mode	Length (m)	Connector Combination	Outer Jacket Size
<ul style="list-style-type: none"> UPC APC 	<ul style="list-style-type: none"> OM2 OM3 OM4 Single-Mode 	<ul style="list-style-type: none"> 1m 2m 3m 5m 10m 15m 20 m 25m 30m XXXm 	<ul style="list-style-type: none"> SC - SC LC - LC SC - LC SC - ST LC - ST 	<ul style="list-style-type: none"> 1.6 mm 2.0 mm 3.0 mm

*Available in any length and combination of connectors upon request.



Want to know more about FiberCore?

For more information visit www.fibercore-plus.com or contact sales@fibercore-plus.com

V1.0 - 09012025

STANDARD & COMPLIANCES

■ Connector Compliances

- LC Connectors, TIA/EIA-604-10
- SC Connectors, TIA/ EIA-604-3

■ Single-Mode OS2

The standard single-mode offering is a 10mm OS2 bend insensitive fiber. Bend performances of 7.5mm and 5.0mm are also available.

• Compliances

- ICEA S-83-596 UL1666
- TIA492-CAAB
- TIA-568-C.3
- TIA-568-D

• Available Fiber Types

- ICEA S-83-596 UL1666
- TIA492-CAAB
- TIA-568-C.3
- TIA-568-D

■ Multimode 62.5µm OM1

• Compliances

- ICEA S-83-596 UL1666
- TIA492-AAAA-A
- TIA-568-C.3
- TIA-568-D
- ISO/IEC 11801 Type OM1
- IEC 60793-10 UL1666

■ Multimode 50µm OM3 / OM4 / OM5

• Compliances

- ICEA S-83-596 UL1666
- TIA-568-C.3
- TIA-568-D
- IEC 60793-10 UL1666

• Available Fiber Types

- OM3 optical fiber compliant to TIA492-AAAC-B, A1a.2 to IEC60793-2-10
- OM4 optical fiber compliant to TIA492-AAAD, A1a.3 to IEC60793-2-10
- OM5 optical fiber compliant to TIA492-AAAE, A1-OM5 to IEC60793-2-10



Want to know more about FiberCore?

For more information visit www.fibercore-plus.com or contact sales@fibercore-plus.com

V1.0 - 09012025

PRODUCT SHOWCASE

**Available in any length and combination of connectors*



LC 2.0mm Duplex, 2F zipcord 2.0mm, 50µm OM2



LC 2.0mm Duplex, 2F zipcord 2.0mm, 50µm OM3



LC 2.0mm Simplex, OS2



LC 900µm Simplex, OS2

